



Unique Planting Medium

FEATURE

It is a UV-resistant Polyethylene bag with texture opening approximately 2mm x 10mm and filled with Fiber Soil



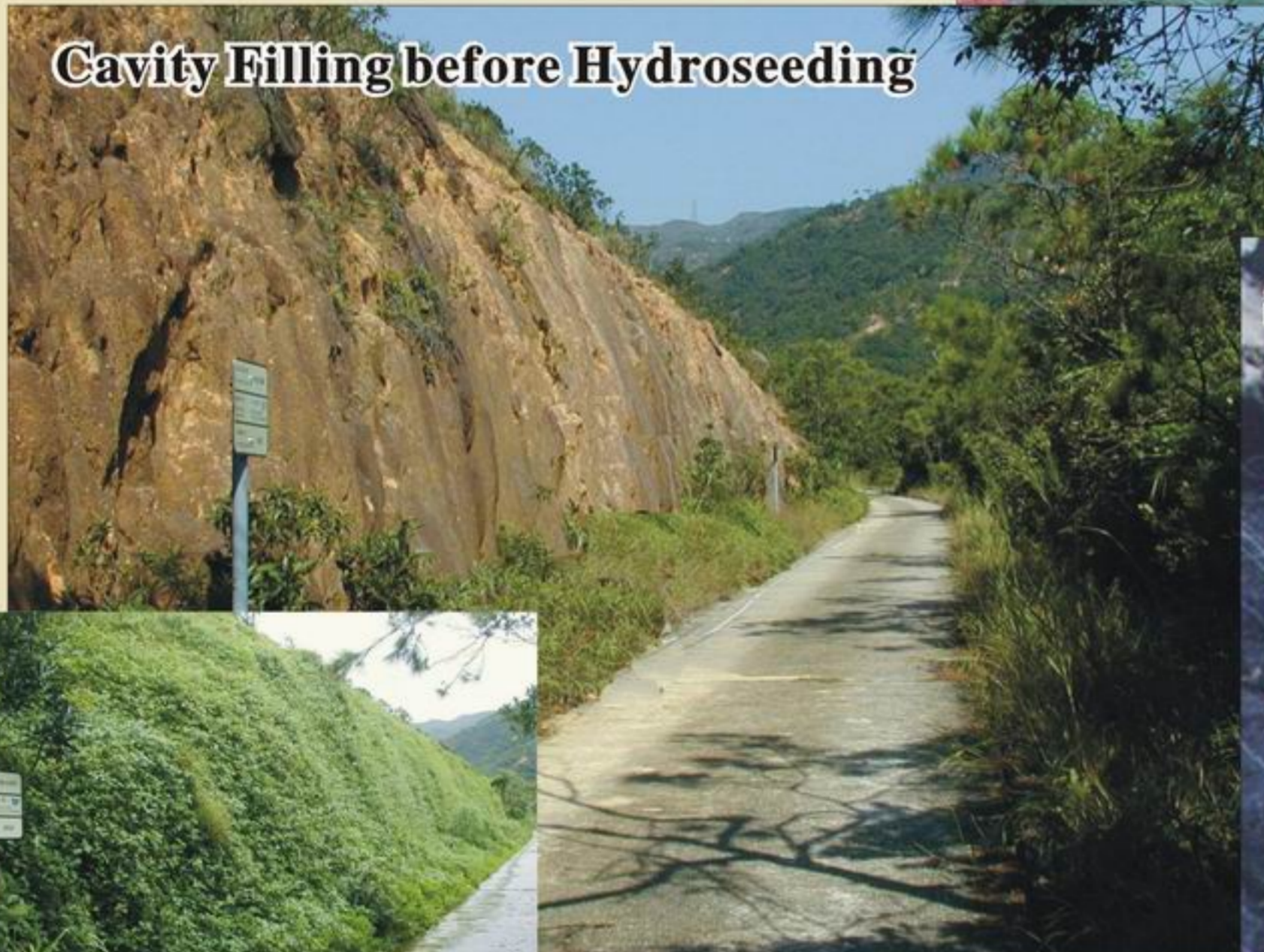
ADVANTAGES

- Good planting medium on steep slope
- Various variety of plant species
- Easy installation
- Permanent UV resistance
- Light weight materials
- Well drainage with Fiber Soil filling
- Prefabricated fertilizer and seed

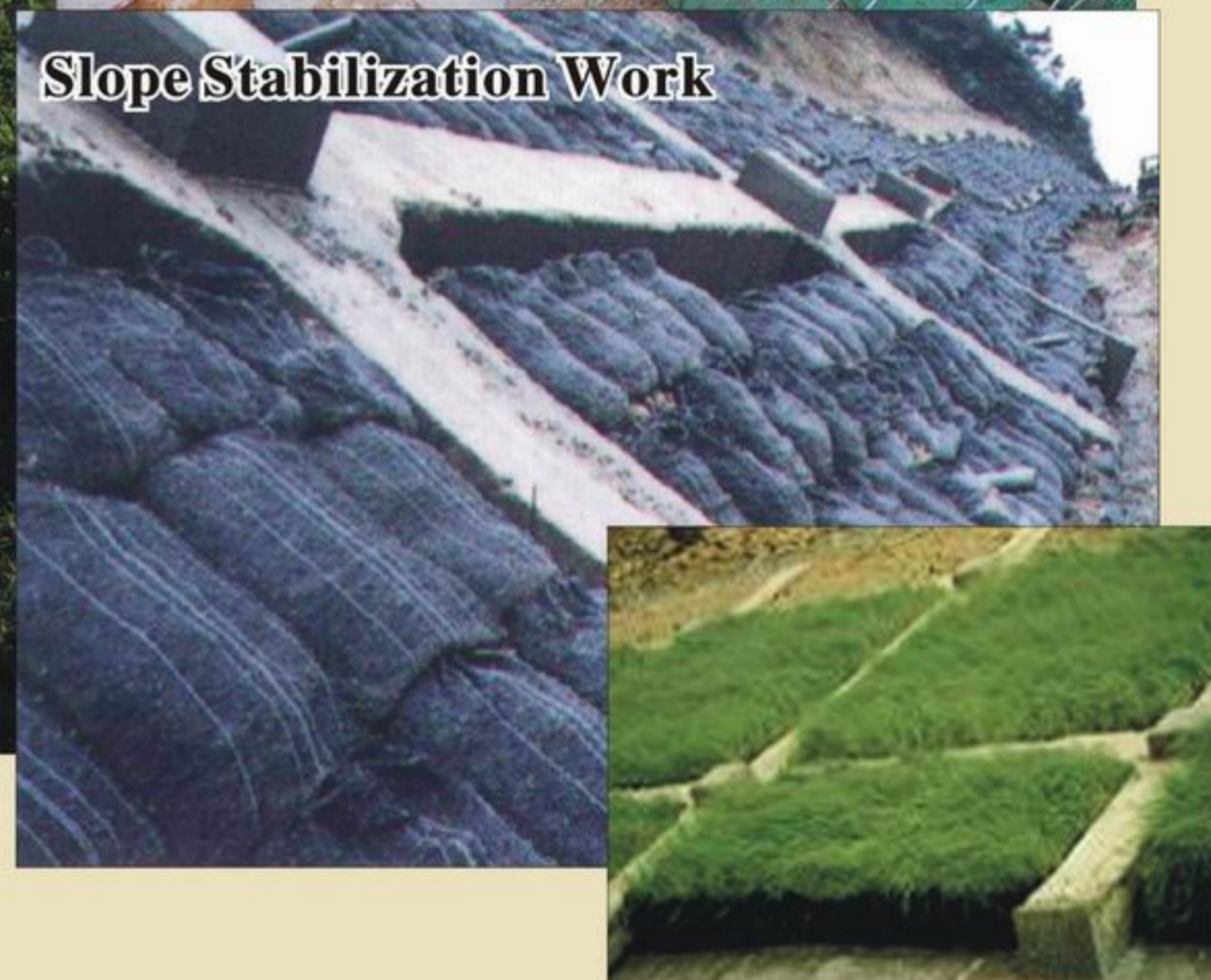
River Bank Rehabilitation



Cavity Filling before Hydroseeding

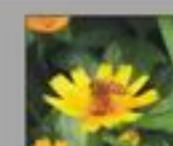


Slope Stabilization Work

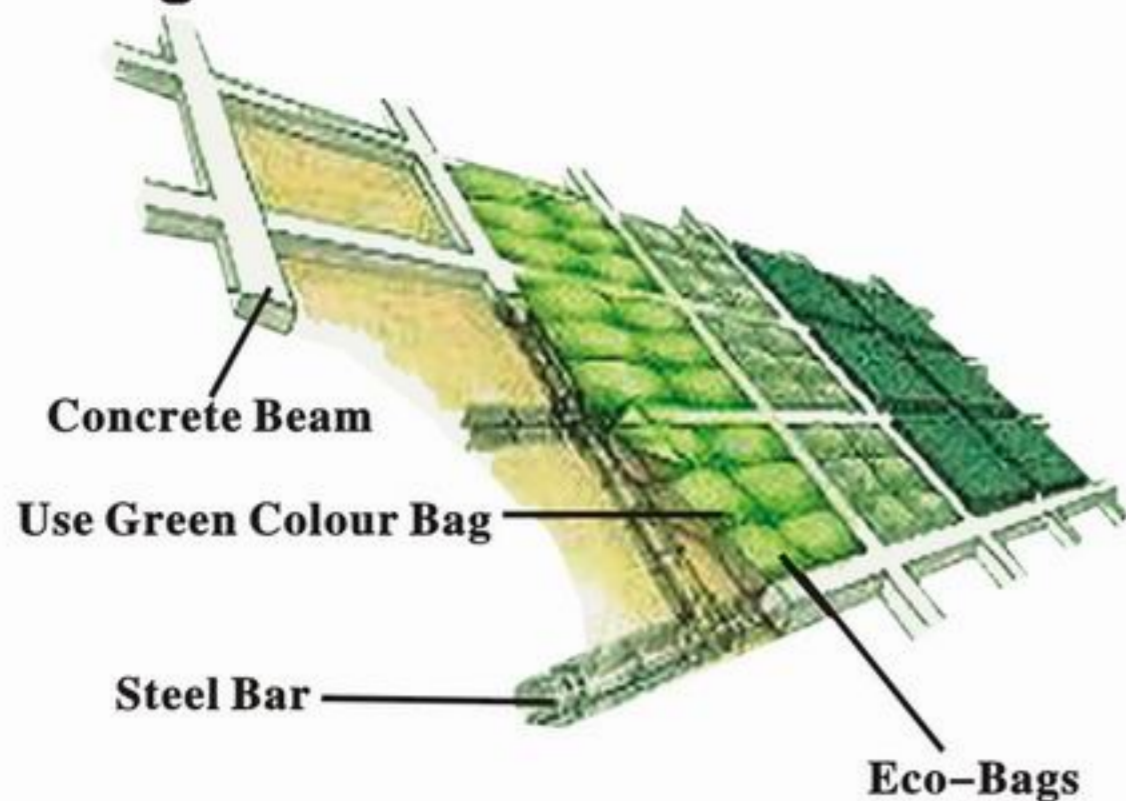


APPLICATIONS

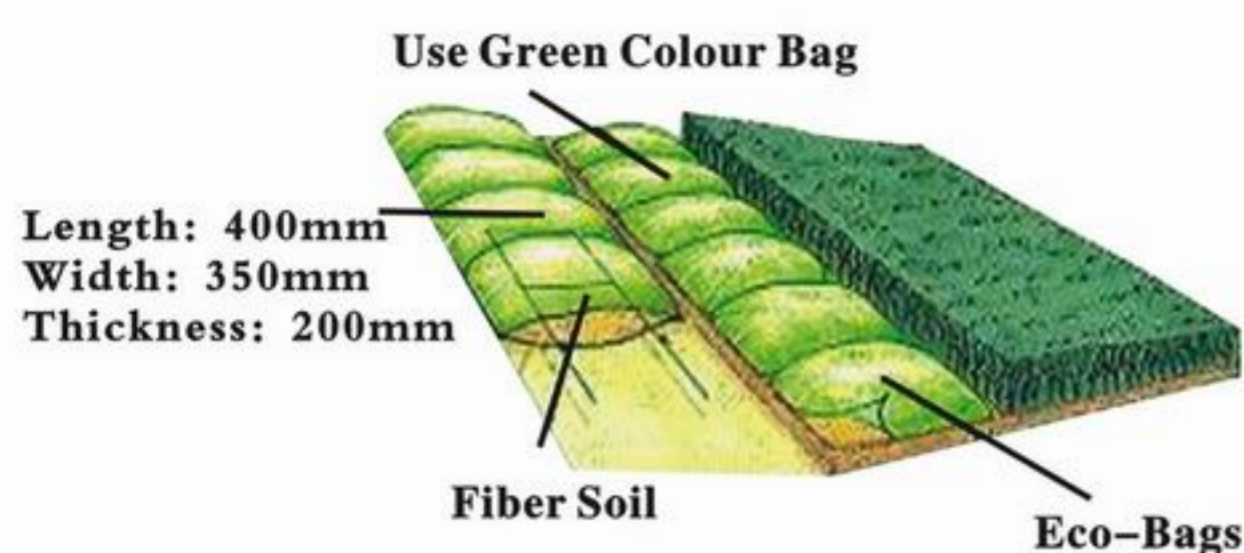
- Rock surface
- Chunam surface
- Concrete surface
- Irregular slope surface
- Soil Nail Head



Grillage

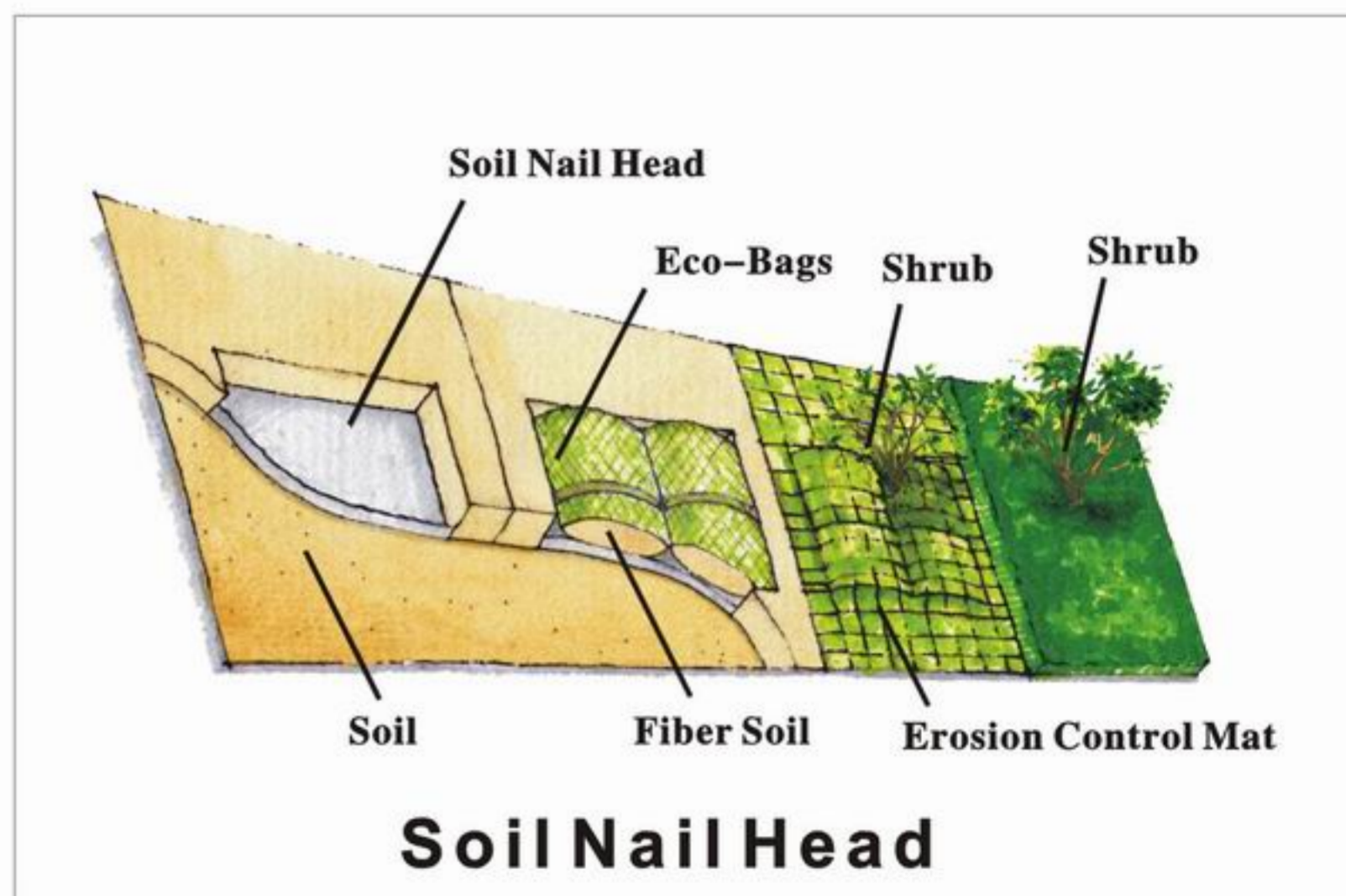
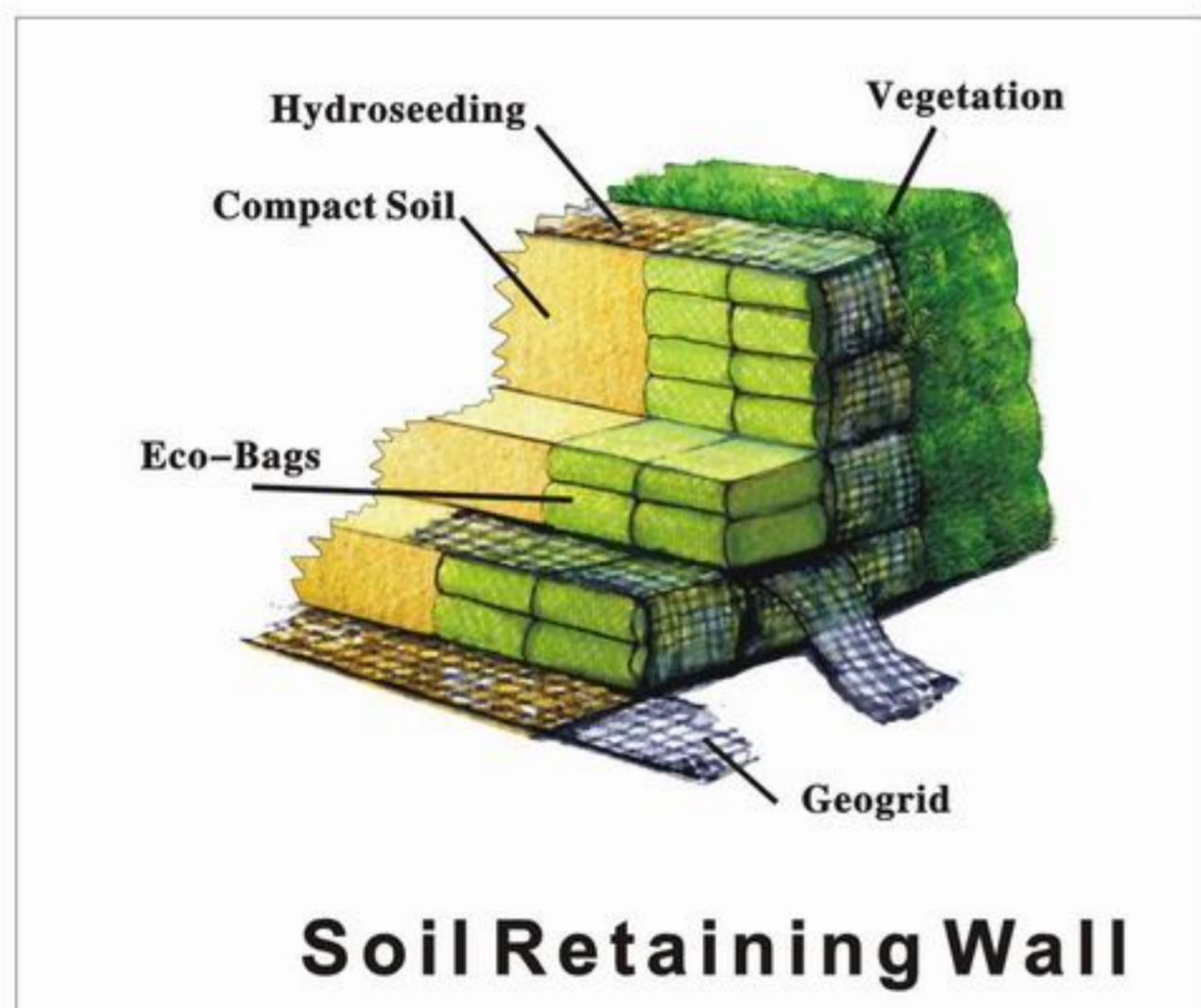


Hard Surface



1. When bags are filled with soil loam, it is necessary to ensure that the mounting material was not peel off, and that the cord at the opening of each bag is then tired tightly.
2. The soil used as topsoil should contain sufficient nutrients. It is also necessary to remove all stones, wood chips, etc, before bagging this soil.
3. When the soil used for filling has insufficient nutrient, a slow-acting organic fertilizer must be chosen and mixed with this soil before filling of bags.
4. Make sure that there is no gap between bags of soil. Fill any gap with soil.

LOCAL JOB REFERENCE



TOYO GREENLAND CO., LTD.

東陽綠化有限公司

No.58, South Section, Wah Shan Village, Sheung Shui, N.T., Hong Kong.

Tel: (852) 2639 9312 Fax: (852) 2377 2150

Web-site: [Http://www.toyogreen.com](http://www.toyogreen.com)

E-mail: enquiry@toyogreen.com



Latest Version: 25 January 2008