

PROPERTIES

1. Porpous concrete

The porpous concrete is made from gravel and cement pastes, which is strong with a low alkali characteristic.

Thickness : 15 - 30 cm

Void ratio : 25 - 30 %

Compressive strength (28 days) : 10 - 15 N/mm²

Unit weight : 1.9 t/m³

2. Filling materials

The filling materials is poured into the void of the porous concrete.

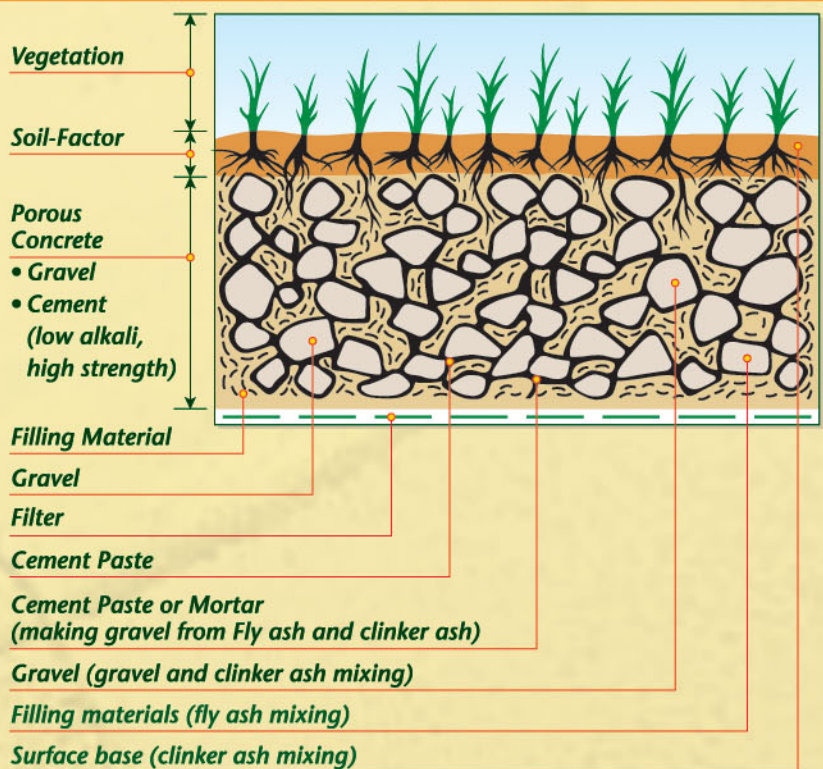
It contains water-retaining material, fertilizer and organic matter which can neutralize alkali efficiently.

3. Soil-Factor

Spray layer of Soil-Factor with thickness of 2-5cm on the porous concrete.

Organic matters and fertilizers with the characteristics of water, fertilizer-retaining and erosion resistant.

COMPOSITION OF GEOGRASS



INSTALLATION PROCEDURE

1

Preparation Work

Mix the porous concrete at the ready-mixed concrete plant.

Construct the porous concrete at the job site.

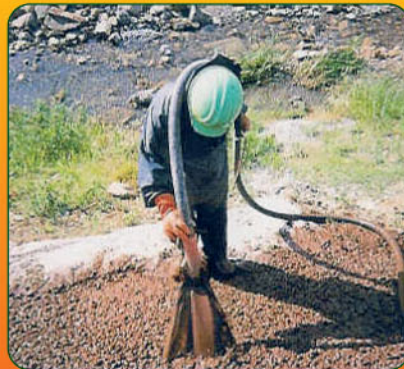


2

Filling Material Installation

Adjust the viscosity of the filling materials.

Fill the space of porous concrete with the filling materials.



3

Spray the Soil-Factor

Spray the Soil-Factor onto the structure surface.



TOYO GREENLAND CO., LTD.
東陽綠化有限公司

No.58, South Section, Wah Shan Village, Sheung Shui, N.T., Hong Kong.

Tel: (852) 2639 9312 Fax: (852) 2377 2150 Web-site: <http://www.toyogreen.com> E-mail: danielho@toyogreen.com



Certificate No.: Q11632

